

HOME & DESIGN

SPECIAL EDITION

Idea Book

your guide to a beautiful home



DISPLAY UNTIL FEBRUARY 2, 2021
WINTER \$7.95



0 74820 08928 6



1 1

before +AFTER

*Winn Design+Build imbues a faded
Rockville contemporary with
curb appeal galore*



THEN

The siding, made of T1-11 plywood, suffered from wood rot and holes from rodents and other wildlife.

The carport was cramped and dilapidated, without room for storage.

The upper-level back deck was falling apart, and some windows were leaking and needed to be replaced.

NOW

Winn combined low-maintenance siding products including wood-look Trespa Pura horizontal siding and Nichiha, a cementitious panelized siding from Japan that requires no painting. Exterior trim is made of Azek and cedar.

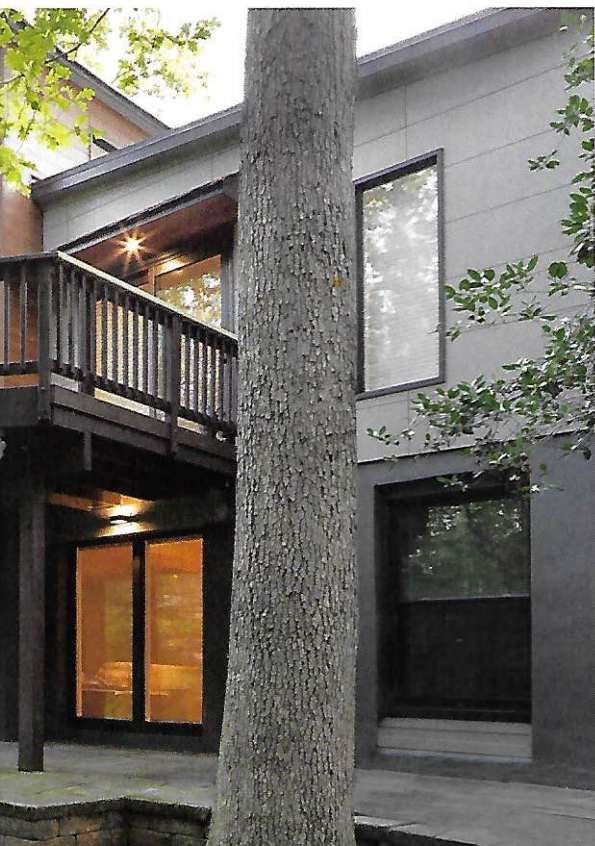
The carport was reframed, its concrete slab modified to accommodate steps, a side walkway and a storage shed. Latticework provides privacy and a decorative element.

The deck was partially rebuilt using composite decking. Pella windows from the Architect Series were installed.

Renovation Architecture: Mike Winn, Winn Design+Build, Falls Church, Virginia.

Photography: Angie Seckinger.





“ We were asked to add curb appeal to a 1970s house in Rockville,” says Mike Winn of Winn Design+Build. “It had recently undergone an interior renovation, but the outside was still dated and rundown.” He and his team addressed elements that were in disrepair and gave the exterior a fresh new look. Among the changes: new cladding (top), a rebuilt carport (above) and a remodeled deck off the rear of the house (left).